

Victoria Park

• 6 min. drive from Inn on Prince Truro • truro.ca • (902) 893-6078 •

Now more than 130 years old, Victoria Park is a 3,000-acre treasure in the heart of Truro. The beautiful and dynamic urban park boasts incredible natural features, including a dramatic steep-sided gorge, a winding river, cascading waterfalls, and a stately old-growth Eastern Hemlock forest. The park offers visitors endless recreational, cultural and leisure opportunities. These include hiking, photography, birdwatching, picnics, family gatherings, snowshoeing, cross-country skiing, swimming, baseball, cultural events, live music, tennis, cycling and more.

Come to play at the playground, swim in the heated outdoor pool, or challenge yourself with a 175-step climb to the top of Jacob's Ladder. Spend an hour or spend the day.



Facilities / Services

Meeting facilities
Parking
Picnic tables
Public washroom
Takeout
Internet access
Children's activities

Admission:

Admission free.

- ↑ 1. Head east on Prince St/Nova Scotia Trunk 2 S toward Court St
_____ 230 m
- ↑ 2. Continue straight onto Prince St
_____ 350 m
- ➔ 3. Turn right onto Pleasant St
_____ 600 m
- ↙ 4. Turn left onto Charles St
_____ 240 m
- ↑ 5. Continue onto Brunswick St
_____ 350 m
- ➔ 6. Turn right onto Park Rd
_____ 270 m

29 Park Road, Truro, NS

Fundy Tidal Bore Viewing Centre

• 6 min. drive from Inn on Prince Truro • novascotia.com • (902) 897-6255 •

The Bay of Fundy's Minas Basin is home to the highest tides in the world! The incoming Fundy tides are so significant that twice a day they temporarily reverse the flow of several rivers that typically flow into the Bay. When the tide and Salmon River collide, a wave (tidal bore) naturally forms and travels upriver around a predicted time. As the river fills up, the tidal bore eventually dissipates, and the river's flow returns back towards the bay.

This wonder of nature can be seen here! The time of the Tidal Bore can vary several minutes either way, depending on weather and conditions. We suggest you arrive 10-15 minutes in advance.



“Experience the power of the highest tides in the world forcing a river to change direction before your eyes”

- ↑ 1. Head west on Prince St/Nova Scotia Trunk 2 N toward Whitman Ct
650 m
- ↘ 2. Turn right onto Nova Scotia Trunk 2 N
1.8 km
- 📍 3. At the roundabout, continue straight onto Nova Scotia Trunk 2
180 m
- ↘ 4. Turn right onto S Tidal Bore Rd
Destination will be on the left
550 m

103 Tidal Bore Road, Lower Truro, NS

Millbrook Cultural & Heritage Centre

• 9 min. drive from Inn on Prince Truro • millbrookheritagecentre.ca • (902) 843-3493 •

Visit the Millbrook Cultural & Heritage Centre which celebrates the area's Mi'kmaq heritage and Glooscap legends. Glooscap, an Abenaki word for "man from nothing" was the first human, created out of a bolt of lightning in the sand, and remains a great figure that appear in many of the Mi'kmaq myths. The Centre offers an innovative multimedia presentation of the rich history of the Mi'kmaq people, as Glooscap guides you through their trials, tribulations and triumphs. Exhibits include ancient artifacts; stunning quillwork and beadwork; and a giant statue of the legendary Glooscap. The Centre also offers a visitor information centre and gift shop with an Aboriginal focus.



Facilities / Services

Bus tours
Gift shop
Meeting facilities
Parking
Picnic tables
Public washroom
Wheelchair accessible
Internet access
Children's activities

Admission:

adult \$6, senior \$5, child \$3.50

- ↑ 1. Head east on Prince St/Nova Scotia Trunk 2 S toward Court St
230 m
 - ↗ 2. Turn right onto Willow St/Nova Scotia Trunk 2 S
1.5 km
 - ↗ 3. Turn right onto McClures Mills Rd
240 m
 - ↶ 4. Turn left onto James St
2 min (1.4 km)
 - ↶ 5. Turn left onto Abenaki Rd
1 min (950 m)
- Continue on Abenaki Conn. Drive to Treaty Trail in Millbrook
2 min (1.0 km)
- ↗ 6. Turn right onto Abenaki Conn
600 m
 - ↑ 7. Continue onto Tower Rd
210 m
 - ↗ 8. Turn right onto Treaty Trail
Destination will be on the right
200 m

65 Treaty Trail, Millbrook, NS

Little White Schoolhouse Museum

• 2 min. drive from Inn on Prince Truro • littlewhiteschool.ca • (902) 895-5170 •

Step back to the days of slates and handbells at the Little White Schoolhouse Museum, a Truro landmark devoted to the history of early education in Nova Scotia in the 19th and 20th centuries.

Formerly a school building, the museum is fully restored and contains books and artifacts from the era of the one-room schoolhouse, as well as photos of the Provincial Normal School and College. The museum is open June 1 – August 31 and located on the grounds of the NSCC Truro Campus.



Facilities / Services

Bus tours

Parking

Internet access

Admission:

Admission free; donations welcome.

- ↑ 1. Head east on Prince St/Nova Scotia Trunk 2 S toward Court St
230 m
- ↘ 2. Turn right onto Willow St/Nova Scotia Trunk 2 S
600 m
- ↙ 3. Turn left toward Arthur St
68 m
- ↘ 4. Turn right onto Arthur St
Destination will be on the left
16 m

20 Arthur Street, Truro, NS

Marigold Cultural Centre

• 1 min. drive from Inn on Prince Truro • marigoldcentre.ca • (902) 897-4004 •

For a number of years, the town of Truro lacked an arts and cultural centre to host various live performances and arts education programs. When the former Centennial Theatre, located in the heart of Truro, became available a plan to purchase and develop the facility into that long-awaited venue was created. That plan resulted in the money for both the purchase and the renovation of the facility being raised through a Community Economic Development Investment Funds cooperative venture.

The Centre houses a 208-seat theatre, a small art gallery, a workshop space for arts education programming, a sports heritage hall, a boardroom, a concession area, and offices. With the strong support of the community and various organizations, the Marigold Cultural Centre provides a variety of cultural programming to a large number of Truro-area residents, while also providing a major downtown focus for economic development.



- ↑ 1. Head east on Prince St/Nova Scotia Trunk 2 S toward Court St
230 m
- ↑ 2. Continue straight onto Prince St
Destination will be on the left
300 m

605 Prince Street, Truro, NS

Rath Eastlink Community Centre

• 5 min. drive from Inn on Prince Truro • ratheastlinkcommunitycentre.ca • (902) 893-2224 •

The Rath Eastlink Community Centre, a non-profit Society governed by a Board of Directors, is full of exciting options that will help you and your family live an active lifestyle. Hosting an Aquatic Centre with two pools and a 2.5 story water slide; fitness centre and studio with cardio, weight lifting, and circuit equipment; athletic development centre; indoor 35' high rock climbing wall; NHL sized ice pad for skating, surrounded by 2,500 fixed seats; in-house food & beverage provider; and a walking/jogging track free for public use, the recreation opportunities are extensive!

Home to the Truro Junior A Bearcats, the Community Credit Union Arena within the RECC has seating capacity for over 3,000 for concert and sporting events, and has played host to the Beach Boys, Kenny Rogers, Travis Tritt, Sammy Kershaw, Jann Arden, the Harlem Globetrotters, Atlantic Canadian Cheer Leading Competitions, annual tradeshow, and more!



- ↑ 1. Head east on Prince St/Nova Scotia Trunk 2 S toward Court St
230 m
- ↘ 2. Turn right onto Willow St/Nova Scotia Trunk 2 S
1.5 km
- ↘ 3. Turn right onto McClures Mills Rd
700 m
- ↙ 4. Turn left onto Abenaki Rd
Destination will be on the right
280 m

625 Abenaki Road, Truro, NS

Mastodon Ridge

• 20 min. drive from Inn on Prince Truro • mastodonridge.ca • (902) 639-2345 •

There's something for everyone at Mastodon Ridge during the summer season! Experience history, culture and nature. Take in a little shopping. Enjoy some 18-hole mini-golf. Learn about the past through our interpretive panels and outdoor displays. Our Mastodon replica is life-size and a legend in these parts! Shop local at our Sunday Farmers Market. Relax and enjoy great food and beverages. Join us at the Ridge!



Facilities / Services

Gift shop
Parking
Picnic Tables
Wheelchair accessible
Internet access

Admission:

Museum – free
Mini-golf – adults \$4, children \$3.50

Get on NS-102 S in Truro Heights from Nova Scotia Trunk 2 S and McClures Mills Rd

- ↑ 1. Head east on Prince St/Nova Scotia Trunk 2 S toward Court St
6 min (3.5 km)
230 m
- ↗ 2. Turn right onto Willow St/Nova Scotia Trunk 2 S
1.5 km
- ↗ 3. Turn right onto McClures Mills Rd
1.1 km
- ↑ 4. Continue onto Truro Heights Connector Rd
220 m
- ⚠ 5. Take the Nova Scotia Highway 102 S ramp to Halifax
550 m

Follow NS-102 S to Main St W in Stewiacke. Take exit 11 from NS-102 S

- ⚠ 6. Merge onto NS-102 S
14 min (25.2 km)
24.8 km
- ↘ 7. Take exit 11 toward NS-2/NS-224/Stewiacke/Wildlife Park/Musquodoboit Valley
350 m
- ↙ 8. Turn left onto Main St W
Destination will be on the left
21 x (190 mi)

87 Main Street West, Stewiacke, NS

Colchester Historeum

• 3 min. drive from Inn on Prince Truro • colchesterhistoreum.ca • (902) 895-6284 •

Since 1976, the Colchester Historical Society's mission has been to collect, preserve, and exhibit, for the education and enjoyment of present and future generations, artifacts and documents relating to the social, cultural, and natural history of Colchester County, Nova Scotia.

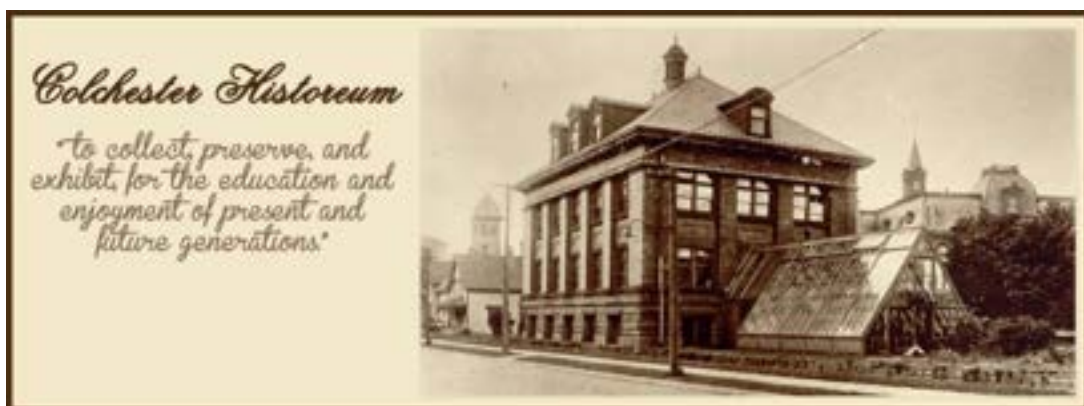
The **Museum** collects, preserves and exhibits artifacts and stories related to Colchester heritage. The Historeum Shop offers you an opportunity for take-home treasures.

The **Archives** preserves thousands of records, documents, publications and photos to help with historical and genealogical research. An Archives Book Mart offers local publications for purchase.

Throughout the year, a series of public programs with informative speakers enliven our understanding of Colchester's history.



- ↑ 1. Head east on Prince St/Nova Scotia Trunk 2 S toward Court St
230 m
- ↑ 2. Continue straight onto Prince St
600 m
- ↘ 3. Turn right onto Young St
Destination will be on the left
150 m



29 Young Street, Truro, NS

Tidal Bore Rafting

• 23 min. drive from Inn on Prince Truro • tidalboreadventures.ca • (902) 986-1412 •

Experience the fun and excitement of the power of the highest tides in the world! Relax on the lazy outgoing tide and take in the sites but get ready as the tidal bore makes its way in. The water from the Bay of Fundy gets funneled into the Shubenacadie river to create a surge of water. The front wave of this surge is known as the tidal bore. There are very few places in the world that have a tidal bore and even fewer that can compare in size! After the tidal bore goes by the river reverses direction and starts flowing inland at nearly 30km/hr. It is because of the huge volume of water rolling over the huge sandbars creates our rapids ranging from 4-18ft standing waves!

Tidal Bore Rafting is a unique adventure found only in Nova Scotia. This adventure is for everyone! There is a lot of flexibility in the intensity of the trips. Bigger tides will produce bigger waves and faster water. Lower tides will produce smaller waves and the water is not moving quite as fast. No matter what size tide, the guide has full control of the zodiac, and can tailor the trip for you.



- ↑ 1. Head west on Prince St/Nova Scotia Trunk 2 N toward Whitman Ct
650 m
- ↘ 2. Turn right onto Nova Scotia Trunk 2 N
1.8 km
- ⦿ 3. At the roundabout, continue straight onto Glooscap Trail/Nova Scotia Trunk 2/NS-236 W
Continue to follow Glooscap Trail/NS-236 W
19.0 km
- ↘ 4. Turn right to stay on Glooscap Trail/NS-236 W (signs for NS-215/Maitland/Windsor)
Destination will be on the right
1.2 km

45, NS-236, Green Oaks, NS

Sugar Moon Farm

• 31 min. drive from Inn on Prince Truro • sugarmoon.ca • (902) 657-3348 •

Sugar Moon Farm is a family-owned 200-acre farm with a 2500-tap maple syrup operation and a 60-seat log restaurant where you can "Eat, Tour, Hike + Shop" year-round. We proudly continue the spring-time tradition of creating maple syrup over a wood-fired evaporator, and invite visitors from all over the world for a maple syrup experience throughout the year. Book "Maple Magic" on our website for the most complete visit, featuring a guided tour, an over-the-top brunch and sugar-on-snow.

Or just drop in and enjoy a tasty local maple brunch all day, featuring organic local ingredients, maple iced drinks, maple cocktails and NS craft beer. Take a guided indoor sugar camp tour where you will learn about maple syrup and hear our stories. Bring home Sugar Moon goodies from our shop.



Facilities / Services

Bus tours
Gift shop
Parking
Picnic tables
Restaurant
Wheelchair accessible
Internet access

Activities:

- ↑ 1. Head east on Prince St/Nova Scotia Trunk 2 S toward Court St 230 m
- ↩ 2. Turn left onto Court St 130 m
- ↪ 3. Turn right onto Queen St 130 m
- ↩ 4. Turn left onto Park St 1.7 km
- ↩ 5. Turn left onto Main St/NS-4 W 850 m
- ↪ 6. Turn right onto NS-311 N (signs for Earltown/Tatamagouche) 25.9 km
- ↩ 7. Turn left onto Alex MacDonald Rd
📍 Destination will be on the left 1.1 km

Hiking, snowshoeing

221 Alex MacDonald Road, Tatamagouche, NS

Masstown Market

• 17 min. drive from Inn on Prince Truro • masstownmarket.com • (902) 662-2816 •

The Jennings family and all our staff welcome you to the Masstown Market experience. This thriving family business began as a farm-gate operation in the spring of 1969, and has grown to become a local landmark thanks to our tradition of quality foods, great selection, and friendly service.

Browse our large, bright displays of the finest fruits & vegetables, take in the delights of our homestyle bakery, savour our famous chowders and soups, delight in a cool offering of ice cream from a local dairy, stroll through our unique gift shop and fully stocked garden centre, search out local meat and cheese specialities in our full-serve delicatessen, and find the perfect pairing at our NSLC liquor boutique.

Visit our full-size lighthouse which houses a fresh fish shop – order your fish & chips from the restaurant in the boat and dine on the dock. On clear days you can view the Bay of Fundy in the distance from the top of the lighthouse. Our Bay of Fundy interpretive displays offer an insight into the natural wonders of the region, our free public Internet access keeps you in touch with home, our ATM offers the convenience of in-store cash withdrawals, and our large clean washrooms are a welcome offering for the travelling public. We have kennels and fresh water in our green space available for our shoppers' four legged family members to use while visiting the Market.

- Get on NS-102 in Lower Truro 3 min (2.8 km)
1. Head west on Prince St/Nova Scotia Trunk 2 N toward Whitman Ct 650 m
 2. Turn right onto Nova Scotia Trunk 2 N 1.8 km
 3. At the roundabout, take the 1st exit onto the NS-102 ramp 290 m
- Drive from Trans-Canada Hwy/NS-104 W to Masstown. Take exit 12 from Trans-Canada Hwy/NS-104 W 10 min (16.7 km)
4. Merge onto NS-102 1.8 km
 5. Use the left lane to take exit 15W for Trans-Canada Highway/NS-104 W toward Amherst/New Brunswick 1.7 km
 6. Merge onto Trans-Canada Hwy/NS-104 W 12.4 km
 7. Take exit 12 toward NS-2/NS-4/Masstown/Glenholme/Lr. Debert 1.1 km
- Continue on Nova Scotia Trunk 2 S/NS-4 E to your destination 2 min (200 m)
8. At the roundabout, take the 2nd exit onto Nova Scotia Trunk 2 S/NS-4 E 170 m
 9. Turn right 22 m
Destination will be on the right



10622 Nova Scotia Trunk 2, Debert, NS

Burntcoat Head Park

• 53 min. drive from Inn on Prince Truro • burntcoatheadpark.ca • (902) 369-2529 •

Come and walk, play and explore on the ocean floor! Burntcoat Head Park is home of the world's highest recorded tides. 160 billion tones of water flow daily into the basin every 13 hours which is more than the combined flow of the world's freshwater rivers!

Discover small species of ocean life in pools of ocean water left behind when the tides are out and walk for miles on the ocean floor.

On site is a beautiful lighthouse and 3-acre park. You will also find, walking trails and a scenic view of the Cobequid Bay offering spectacular sunset displays in the evening.

The replica lighthouse contains an interpretive centre about the Fundy tides, old lighthouses, and the history of the area.



- ↑ 1. Head west on Prince St/Nova Scotia Trunk 2 N toward Whitman Ct
650 m
- ↘ 2. Turn right onto Nova Scotia Trunk 2 N
1.8 km
- ⦿ 3. At the roundabout, continue straight onto Glooscap Trail/Nova Scotia Trunk 2/NS-236 W
Continue to follow Glooscap Trail/NS-236 W
19.0 km
- ↘ 4. Turn right to stay on Glooscap Trail/NS-236 W (signs for NS-215/Maitland/Windsor)
3.0 km
- ↘ 5. Turn right onto Hwy 236/Glooscap Trail/NS-215 W/NS-236 W (signs for Maitland)
Continue to follow Glooscap Trail/NS-215 W
29.3 km
- ↘ 6. Turn right onto Burntcoat Rd
5.3 km
- ↘ 7. Turn right
500 m

627 Burntcoat Head Road, Noel, NS

Shubenacadie Wildlife Park

• 29 min. drive from Inn on Prince Truro • wildlifepark.novascotia.ca • (902) 758-2040 •

The Shubenacadie Provincial Wildlife Park is set in 40 hectares of natural woodlands, with native mammals and birds, as well as some exotic species. The park provides static and interactive displays on wildlife and their habitats at the Creighton Environment Centre; displays on waterfowl and wetlands at the DUC Greenwing Legacy Interpretation Centre; and wetland educational trails. Pack a picnic lunch and enjoy our 8-hectare picnic area which provides a children's playground, shelters, tables, washrooms, canteen services and running water.

Our two kilometers of wheelchair-accessible pathways provide an open and intimate environment to view the animals. Interpretive signs throughout the park will tell you everything you need to know about our wildlife exhibits. Many of our animals are born or raised in captivity, while other residents were brought to the Wildlife Park injured and cannot be rehabilitated enough to be returned to the wild.



Get on NS-102 S in Truro Heights from Nova Scotia Trunk 2 S and McClures Mills Rd

- 8 min (3.5 km)
1. Head east on Prince St/Nova Scotia Trunk 2 S toward Court St
 2. Turn right onto Willow St/Nova Scotia Trunk 2 S
 3. Turn right onto McClures Mills Rd
 4. Continue onto Truro Heights Connector Rd
 5. Take the Nova Scotia Highway 102 S ramp to Halifax

Follow NS-102 S to Main St W in Stewiacke. Take exit 11 from NS-102 S

- 14 min (25.2 km)
6. Merge onto NS-102 S
 7. Take exit 11 toward NS-2/NS-224/Stewiacke/Wildlife Park/Musquodoboit Valley

Take Nova Scotia Trunk 2 S to Creighton Rd in Shubenacadie East

- 6 min (7.4 km)
8. Turn left onto Main St W
 9. Turn right onto Nova Scotia Trunk 2 S (signs for Shubenacadie/Wildlife Park)
 10. Turn left onto Creighton Rd
- Destination will be on the right

149 Creighton Road, Shubenacadie, NS

Anne Murray Museum

• 58 min. drive from Inn on Prince Truro • annemurraycentre.com • (902) 597-8614 •

The Anne Murray Centre showcases the incredible life and times of Springhill's internationally acclaimed songstress Anne Murray. Step into the remarkable story of this Canadian icon and take an intimate look at her humble beginnings, flight to fame, and enduring contributions to the world of music. Create your own "duet" in Anne's mini recording studio, pick up a signature memento to mark your visit, and walk the rows of awards amassed during her 40-year music career – where all that glitters is truly gold (or platinum!).



Get on NS-102 in Lower Truro

- 5 min (2.8 km)
1. Head west on Prince St/Nova Scotia Trunk 2 N toward Whitman Ct
650 m
 2. Turn right onto Nova Scotia Trunk 2 N
1.8 km
 3. At the roundabout, take the 1st exit onto the NS-102 ramp
290 m

Follow Trans-Canada Hwy/NS-104 W to NS-142 S in Cumberland, Subd. C. Take exit 5 from Trans-Canada Hwy/NS-104 W

- 46 min (79.3 km)
4. Merge onto NS-102
1.6 km
 5. Use the left lane to take exit 15W for Trans-Canada Highway/NS-104 W toward Amherst/New Brunswick
1.7 km
 6. Merge onto Trans-Canada Hwy/NS-104 W
▲ Partial toll road
75.6 km
 7. Take exit 5 for NS-142 toward Springhill/Parrsboro
450 m

Continue on NS-142 S. Drive to Nova Scotia Trunk 2 S in Springhill

- 7 min (7.4 km)
8. Turn left onto NS-142 S
6.2 km
 9. Turn left onto Nova Scotia Trunk 2 S (signs for NS-2 E/NS-321 N/Springhill/Parrsboro)
📍 Destination will be on the right
1.2 km

36 Main Street, Springhill, NS

Great Village Antiques

• 23 min. drive from Inn on Prince Truro • greatvillageantiques.com • (902) 668-2149 •

With 10,000 square feet of high turnover stock and more than 30 dealers, this is a must visit establishment for antique lovers, decorators and collectors of all stripes.

Whether you collect something specific, are restoring or decorating your home, or just love to hunt for treasures, this shop has so much to offer! Trying to replace Nanny's broken teapot? Find the dinky car you lost when you were seven? Adorn your porch with rustic or nautical elements? Outfit your garage with vintage advertising? They have it all.

Go and see for yourself, and be sure to go often – because there are so many dealers replenishing stock so often, there is always lots of new stuff to discover!



Get on NS-102 in Lower Truro

- 5 min (2.8 km)
↑ 1. Head west on Prince St/Nova Scotia Trunk 2 N toward Whitman Ct
650 m
- ↘ 2. Turn right onto Nova Scotia Trunk 2 N
1.8 km
- 📍 3. At the roundabout, take the 1st exit onto the NS-102 ramp
290 m

Take Trans-Canada Hwy/NS-104 W to Station Rd in Great Village. Take exit 10 from Trans-Canada Hwy/NS-104 W

- 15 min (25.4 km)
🚶 4. Merge onto NS-102
1.6 km
- ↘ 5. Use the left lane to take exit 15W for Trans-Canada Highway/NS-104 W toward Amherst/New Brunswick
1.7 km
- 🚶 6. Merge onto Trans-Canada Hwy/NS-104 W
21.8 km
- ↘ 7. Take exit 10 toward NS-4/NS-2/Great Village/Bass River/Londonderry
350 m

Continue on Station Rd. Drive to Nova Scotia Trunk 2 N

- 4 min (3.9 km)
↙ 8. Turn left onto Station Rd
3.4 km
- ↘ 9. Turn right onto Nova Scotia Trunk 2 N
📍 Destination will be on the left
450 m

8728 Highway #2, Great Village, NS

Museum of Industry

- 40 min. drive from Inn on Prince Truro • museumofindustry.novascotia.ca • (902) 755-5425 •

Come explore Atlantic Canada's largest museum to discover the people, places and machines of Nova Scotia's industrial past at the Nova Scotia Museum of Industry. Push, pull, lift, drop and laugh as you enjoy acres of exhibits and interactive displays that highlight how technology and people worked throughout this province's history. Do your best to keep pace on the assembly line, test your strength at the weights and pulleys stations, get a workout at the water-powered pumps and bask in the spirit of invention as you marvel at Canada's oldest surviving steam locomotives, Samson and Albion. Children will love the hands-on fun, the trains, and the demos.

Featuring more than 36,000 artifacts, there's no better place to find out the true meaning of "Made in Nova Scotia" than the Museum of Industry! Our gift shop offers something for everyone – unique giftware, toys, our made-in-Nova Scotia items, and small, unbreakable gifts and souvenirs for travellers!



- Get on NS-102 in Lower Truro 3 min (2.8 km)
1. Head west on Prince St/Nova Scotia Trunk 2 N toward Whitman Ct 550 m
 2. Turn right onto Nova Scotia Trunk 2 N 1.8 km
 3. At the roundabout, take the 1st exit onto the NS-102 ramp 290 m
- Follow Trans-Canada Hwy/NS-104 E to N Foord St/NS-374 in Stellarton. Take exit 24 from Trans-Canada Hwy/NS-104 E 34 min (61.1 km)
4. Merge onto NS-102 1.8 km
 5. Take exit 15E for Trans-Canada Highway/NS-104 E toward New Glasgow/Cape Breton/PEI Ferry Caribou 1.4 km
 6. Merge onto Trans-Canada Hwy/NS-104 E 88.0 km
 7. Take exit 24 toward New Glasgow/Stellarton/Trenton 210 m
- Continue on N Foord St/NS-374 to your destination 2 min (480 m)
8. At the roundabout, take the 3rd exit onto N Foord St/NS-374 220 m
 9. Turn left 300 m
 10. Turn right 81 m
Destination will be on the right

147 North Foord Street, Stellarton, NS

Five Islands Provincial Park

• 56 min. drive from Inn on Prince Truro • parks.novascotia.ca • 1-888-544-3434 •

Rising majestically from the shores of the Bay of Fundy, Five Islands Provincial Park is one of Nova Scotia's premiere outdoor destinations. The park features 90 metre (300 ft.) sea cliffs overlooking the world's highest tides, a spectacular setting for camping or any of the many opportunities that abound for hiking, beachcombing, rock collecting and clam digging.



Facilities and Services:

92 campsites, 35 serviced sites, 10 walk-in sites, group camping sites, comfort station, hiking trails, beach access (unsupervised), limited wi-fi available.

Take Trans-Canada Hwy/NS-104 W and Nova Scotia Trunk 2 N to Bentley Rd/Bentley Branch Rd in Five Islands

50 min (68.2 km)

- ↑ 1. Head west on Prince St/Nova Scotia Trunk 2 N toward Whitman Ct
650 m
- ↘ 2. Turn right onto Nova Scotia Trunk 2 N
1.8 km
- 📍 3. At the roundabout, take the 1st exit onto the NS-102 ramp
290 m
- ⤴ 4. Merge onto NS-102
1.6 km
- ↘ 5. Use the left lane to take exit 15W for Trans-Canada Highway/NS-104 W toward Amherst/New Brunswick
1.7 km
- ⤴ 6. Merge onto Trans-Canada Hwy/NS-104 W
21.8 km
- ↘ 7. Take exit 10 toward NS-4/NS-2/Great Village/Bass River/Londonderry
350 m
- ↙ 8. Turn left onto Station Rd
3.4 km
- ↘ 9. Turn right onto Nova Scotia Trunk 2 N
36.6 km
- ↙ 10. Turn left onto Bentley Rd/Bentley Branch Rd
• Continue to follow Bentley Branch Rd
• Destination will be on the left
6 min (3.0 km)

618 Bentley Branch Road, Five Islands, NS

Ski Wentworth

- 32 min. drive from Inn on Prince Truro • skiwentworth.ca • (902) 548-2089 •

Ski Wentworth, the Maritime's largest ski area, is 238 metres (815 feet) high with 25 alpine trails, 10 km of cross country trails, terrain park, aerials and moguls sites, snowshoeing, and a variety of trails that will challenge any skier from beginner to expert. The longest run is 3.7 km. Lifts include a quad chair, a conveyor, and a T-bar. Night skiing starts at 4:00 pm. Our facilities include our Snow School; ski shop and repair; ski and snowboard rentals and lessons; and cafeteria and bar. Ski Wentworth was the 2011 Canada Winter Games venue for alpine and freestyle skiing.



Get on NS-102 in Lower Truro

- 5 min (2.8 km)
 - ↑ 1. Head west on Prince St/Nova Scotia Trunk 2 N toward Whitman Ct
 - 650 m
 - ↘ 2. Turn right onto Nova Scotia Trunk 2 N
 - 1.8 km
 - 📍 3. At the roundabout, take the 1st exit onto the NS-102 ramp
 - 290 m

Take Trans-Canada Hwy/NS-104 W to NS-4 W in Glenholme. Exit from Trans-Canada Hwy/NS-104 W

- 12 min (20.1 km)
 - 🚶 4. Merge onto NS-102
 - 1.6 km
 - ↘ 5. Use the left lane to take exit 15W for Trans-Canada Highway/NS-104 W toward Amherst/New Brunswick
 - 1.7 km
 - 🚶 6. Merge onto Trans-Canada Hwy/NS-104 W
 - 16.4 km
 - ↘ 7. Take the exit toward NS-4 W
 - 500 m
 - ↙ 8. Turn left onto NS-4 W (signs for NS-246/NS-307/Folly Lake/Wentworth/Wallace/tatamagouche/Pugwash)
 - 📍 Destination will be on the right
 - 16 min (22.6 km)

14595 NS-4, Wentworth, NS

Tatamagouche Train

• 45 min. drive from Inn on Prince Truro • tatamagoucheroadtrain.ca •

Four years of hard work by several dedicated volunteers resulted in the launching of the Tatamagouche Road Train in 2016. **Departing from the Foodland parking lot on the hour**, the Train has been transporting capacity loads of tourists, cottagers and local residents around the village all summer. The Train Organizing Committee are running the train on a donation basis (it is not a free service) and it has proved to be a big hit. In fact, the Premier of Nova Scotia, Stephen McNeil came and road the train in August of 2016. Interesting Tour Guides accompany the train rides and have proved to be a popular addition to the experience.

Train runs from May – October.



- ↑ 1. Head east on Prince St/Nova Scotia Trunk 2 S toward Court St
230 m
- ↶ 2. Turn left onto Court St
130 m
- ↷ 3. Turn right onto Queen St
130 m
- ↶ 4. Turn left onto Park St
1.7 km
- ↶ 5. Turn left onto Main St/NS-4 W
850 m
- ↷ 6. Turn right onto NS-311 N (signs for Earltown/Tatamagouche)
48.9 km
- 🚶 7. Merge onto Main St/Sunrise Trail (signs for Nova Scotia Trunk 6 W/Wallace/Amherst)
1.8 km
📍 Destination will be on the left

124 Main Street, Tatamagouche, NS

Ship Hector Museum

• 48 min. drive from Inn on Prince Truro • shiphector.ca • (902) 485-4371 •

On September 15th, 1773, the Hector sailed into Pictou harbour. Aboard were 189 Scottish immigrants who had boarded the ship in Loch Broom more than two months before in search of a better life in the new world.

The Hector Heritage Quay features three stories of displays of information about the passengers the ship and its voyage to the new world, a short documentary, rigging and carving shop, carpentry shop, as well as a full scale replica of the ship which was constructed on site.



Get on NS-102 in Lower Truro

5 min (2.8 km)

1. Head west on Prince St/Nova Scotia Trunk 2 N toward Whitman Ct
650 m
2. Turn right onto Nova Scotia Trunk 2 N
1.8 km
3. At the roundabout, take the 1st exit onto the NS-102 ramp
290 m

Take Trans-Canada Hwy/NS-104 E to W River Rd in Pictou

40 min (69.1 km)

4. Merge onto NS-102
1.6 km
5. Take exit 15E for Trans-Canada Highway/NS-104 E toward New Glasgow/Cape Breton/PEI Ferry Caribou
1.4 km
6. Merge onto Trans-Canada Hwy/NS-104 E
53.8 km
7. Take exit 22 for Trans Canada Highway/NS-106 toward Pictou/Prince Edward Island Ferry
750 m
8. Continue onto Trans-Canada Hwy/NS-106 N
11.6 km

Follow W River Rd and Water St to Caladh Ave

4 min (2.0 km)

9. At Pictou Roundabout, take the 1st exit onto W River Rd heading to Pictou
190 m
 10. At the roundabout, take the 2nd exit and stay on W River Rd
1.1 km
 11. Continue straight onto Water St
600 m
 12. Turn right onto Commercial St
100 m
 13. Turn left onto Caladh Ave
35 m
- i** Destination will be on the right

33 Caladh Avenue, Pictou, NS

Melmerby Beach

• 58 min. drive from Inn on Prince Truro • parks.novascotia.ca • 1-888-544-3434 •

Known for its warm waters, averaging more than 19° Celsius (66° F) in the summer, Melmerby is a popular 2-km beach with boardwalks. The beach is supervised in the months of July and August. Park features include change houses, flush toilets, salt-rinse showers, picnic tables, boat launch and abundant parking. The park also offers an accessible coastal viewing opportunity.



- Get on NS-102 in Lower Truro 5 min (2.8 km)
1. Head west on Prince St/Nova Scotia Trunk 2 N toward Whitman Ct 60 m
 2. Turn right onto Nova Scotia Trunk 2 N 1.6 km
 3. At the roundabout, take the 1st exit onto the NS-102 ramp 290 m
- Follow Trans-Canada Hwy/NS-104 E to Mt William Rd in Pictou, Subd. B. Take exit 1A from Trans-Canada Hwy/NS-106 N 23 min (58.8 km)
4. Merge onto NS-102 1.8 km
 5. Take exit 15E for Trans-Canada Highway/NS-104 E toward New Glasgow/Cape Breton/PEI Ferry Caribou 1.4 km
 6. Merge onto Trans-Canada Hwy/NS-104 E 83.8 km
 7. Take exit 22 for Trans-Canada Highway/NS-106 toward Pictou/Prince Edward Island Ferry 750 m
 8. Continue onto Trans-Canada Hwy/NS-106 N 1.2 km
 9. Take exit 1A toward Trenton/Abercrombie/Regional Landfill Site 300 m
- Take Trenton Conn to Little Harbour Rd/NS-289 E in Merigonish 21 min (30.7 km)
10. Turn right onto Mt William Rd (signs for Mount William Road/Trenton/Abercrombie/Regional Landfill Site) 120 m
 11. Continue onto Trenton Conn 4.1 km
 12. Continue onto Trenton Connector 2.3 km
 13. Continue onto Bruce St (signs for Little Harbour) 280 m
 14. Continue onto Park Rd 1.7 km
 15. Continue onto Logan Rd 2.4 km
 16. Turn left onto Little Harbour Rd/NS-289 E (signs for Melmerby Beach) 4.2 km
 17. Turn right to stay on Little Harbour Rd/NS-289 E (signs for Kings Road/Melmerby Beach) 1.7 km
- Destination will be on the right

6380 Little Harbour Road, Merigomish, NS

Rushton's Beach

• 46 min. drive from Inn on Prince Truro • parks.novascotia.ca • 1-888-544-3434 •

Rushton's Beach Provincial Park offers sheltered picnic grounds and has some of the warmest ocean water in Nova Scotia with broad sandbars at low tide. The salt marsh attracts a great variety of birds.

Group use is available. Amenities include change house and vault toilets.



Follow NS-311 N to NS-326 N in Earltown

26 min (30.4 km)

1. Head east on Prince St/Nova Scotia Trunk 2 S toward Court St
230 m
2. Turn left onto Court St
130 m
3. Turn right onto Queen St
130 m
4. Turn left onto Park St
1.7 km
5. Turn left onto Main St/NS-4 W
850 m
6. Turn right onto NS-311 N (signs for Earltown/Tatamagouche)
27.4 km

7. Turn right onto NS-326 N (signs for NS-6/Denmark/Brule)
15 min (19.6 km)

8. Turn right onto NS-6 E (signs for River John/New Glasgow)
3 min (4.2 km)

Drive to MacLeod Ln

2 min (400 m)

9. Turn left onto MacLeod Ln
230 m
10. Turn right to stay on MacLeod Ln
Destination will be on the right
150 m

723 NS-6, River John, NS

Riverbreeze Farm

• 7 min. drive from Inn on Prince Truro • riverbreeze.info • (902) 895-6541 •

Nova Scotia's award winning entertainment farm! Acres of strawberry/ raspberry & pumpkin u-picks, famous sweetcorn, fall strawberries and more! Open in the fall season, you had better get here early because it will take all day to see everything! That's not all though, every weekend in October is transformed once the sun goes down. "You'll pay to get in, but you'll pray to get out!" That's what they're saying at the terrifying haunted house and haunted corn maze. Think a convincingly creepy backstory, live actors, blood, gore and a real chainsaw...attached to someone...chasing you (at least that's what the rumours say). Beware! This is not for the faint of heart.



Attractions:

12 acre corn maze
Bruce & Tilly, the kangaroos
Giant jumping pillow
Cow train rides
Human foosball
Laser tag
Giant rocking chair
Petting zoo
Wild West town
Bunnyville
Paintball shooting gallery
Giant slingshot
Nascorn 500 pedal car track

- ↑ 1. Head east on Prince St/Nova Scotia Trunk 2 S toward Court St
230 m
- ↶ 2. Turn left onto Court St
130 m
- ↷ 3. Turn right onto Queen St
130 m
- ↶ 4. Turn left onto Park St
1.7 km
- ↶ 5. Turn left onto Main St/NS-4 W
Continue to follow NS-4 W
1.8 km

And much, much more!

660 Onslow Road, Upper Onslow, NS

Truro Farmers' Market

• 3 min. drive from Inn on Prince Truro • trurofarmersmarket.org • (902) 843-4004 •

The Truro Farmers' Market is home to over 50 vendors every Saturday (8am-1pm). Located in the historic fire hall building, the market is a one stop shop and vibrant gathering space in the heart of downtown Truro. The spring season features fresh greens, potted bulbs, perennial & annual plants, flowers, high quality storage produce, tasty baked goods, specialty body products, handcrafted woodwork, decorative crafts, N.S. wine, beer, and spirits, meats, cheese, eggs, delicious foods to enjoy onsite or take home AND more!



Vendors:

Vanderpoel's Pastry
Aroma Maya
Wild Pasture Farm
Beezy Wraps
That Dutchman's Cheese
Chill Street Brewing
Sugar Moon Farm
Downey's Delicious
Red Knot Bakery
Gale's Home Sewing
Kittilsen's Honey
Good Clean Farm
Wayfarer's Ale Society
And many, many more!

- ↑ Head east on Prince St/Nova Scotia Trunk 2 S toward Court St
230 m
- ↑ Continue straight onto Prince St
600 m
- ↪ Turn right onto Young St
Destination will be on the left
75 m



15 Young Street, Truro, NS

My Home Mercantile

• 4 min. drive from Inn on Prince Truro • myhomemercantile.com • (902) 843-5899 •

My Home Mercantile is proud Canadian company that celebrates makers and creators with beautifully discovered products. We carry over 50 different makers from across Canada in our shops and online, as well as beautifully discovered products we have found along the way.

My Home Mercantile was launched in 2018 after our popular clothing line, My Home Apparel, began selling giftware in their shops. Quickly, we could see people were interested in the quality giftware lines we were selling, and so we decided to expand into full stores and an online presence.

My Home Mercantile is the official retailer of My Home Apparel clothing.



Products:

Apparel
Home décor
Health & Beauty
Books & Journals
Cards & Stationary
Gifts

↑ Head east on Prince St/Nova Scotia Trunk 2 S toward Court St

230 m

↑ Continue straight onto Prince St

850 m

↪ Turn right onto Inglis Pl

[i](#) Destination will be on the right

22 m

10 Inglis Place, Truro, NS

Above & Beyond

• 6 min. drive from Inn on Prince Truro • aboveandbeyondhomedecor.com • (902) 895-1445 •

Above & Beyond Home Decor is a home decor, gift and specialty kitchenware boutique. Locally owned and operated, we are located on Inglis Place, in the heart of Downtown Truro's shopping destination. A&B proudly sources international and Canadian-made products in order to provide you with the latest trends in Furniture, Home Decor, Kitchen and Gift. We offer over 2500 square feet of shopping and since 2012, we have been a destination for unique finds. From sofas to soaps and from tableware to toasters, our team is always on hand to share our passion for decorating and cooking. We also offer a wide assortment of, Stationary, Bath & Body, Candles, and many more options for gifting (and indulging). Stop by our store and experience our exceptional customer service for yourself.



Products:

Bath & Beauty
Home Décor
Kitchenware
Furniture
Gifts

Services:

Wedding Registries
Custom Gift Baskets

- ↑ 1. Head east on Prince St/Nova Scotia Trunk 2 S toward Court St
230 m
- ↑ 2. Continue straight onto Prince St
850 m
- ↪ 3. Turn right onto Inglis Pl
Destination will be on the left
130 m

49 Inglis Place, Truro, NS

Jean's Flowers & Gifts

• 5 min. drive from Inn on Prince Truro • jeansflowersandgifts.com • (902) 895-8816 •

Jean's Flowers and Gifts proudly serves the Truro area. We are family owned and operated. We are committed to offering only the finest floral arrangements and gifts, backed by service that is friendly and prompt. Because all of our customers are important, our professional staff is dedicated to making your experience a pleasant one. That is why we always go the extra mile to make your floral gift perfect. Let Jean's Flowers and Gifts be your first choice for flowers.



Products:

Flower Arrangements
Home Décor
Jewellery
Apparel
Succulents
Gifts

- ↑ 1. Head east on Prince St/Nova Scotia Trunk 2 S toward Court St
230 m
- ↑ 2. Continue straight onto Prince St
850 m
- ↪ 3. Turn right onto Inglis Pl
120 m
- ↪ 4. Turn right
i Destination will be on the left
11 m

798 Prince St., Truro, NS

Bike Monkey

• 4 min. drive from Inn on Prince Truro • bikemonkey.ca • (902) 843-7111 •

Full service bicycle shop, family owned and community oriented since 2014, featuring skate service (both hockey and figure) and accessories.

In 2014, Jeff and Grace Simms established Bike Monkey to share their passion for cycling with their community. They wanted to build a place where individuals could find the right equipment and the right support to come together as a cycling community. Not just another bike store, Jeff and Grace wanted to provide a place where the cycling community to grow. They started the Bike Monkey Cycling Club to pursue that mission.

Jeff and Grace's passion is evident in every inch of the store and throughout the community. Whether you need a new bike, a new part or just want to stop in and take a look, come check them out.



- ↑ 1. Head east on Prince St/Nova Scotia Trunk 2 S toward Court St
230 m
- ↑ 2. Continue straight onto Prince St
350 m
- ↗ 3. Turn right onto Pleasant St
400 m
- ↖ 4. Turn left onto Arthur St
240 m
- ↑ 5. Continue onto Esplanade St
270 m
- ↗ 6. Turn right
Destination will be on the right
36 m

130 Esplanade Street, Truro, NS

Inglis Jewellers

• 5 min. drive from Inn on Prince Truro • inglisjewellers.ca • (902) 843-4223 •

Since 1991, Inglis Jewellers has been adding sparkle to the Maritimes. Our bright and welcoming shops in Truro is filled with a beautiful selection of diamonds, precious gems, gold, silver, watches and more. Our customer service is second to none, and we're here to help you make every occasion a special one, from engagements to birthdays to anniversaries to those days when you just want to treat yourself.



Products:

Men's Jewellery
Women's Jewellery
Watches

Services:

Repair
Re-dipping
Re-sizing
Inspection
Cleaning
Engraving

- ↑ 1. Head east on Prince St/Nova Scotia Trunk 2 S toward Court St
230 m
- ↑ 2. Continue straight onto Prince St
850 m
- ↘ 3. Turn right onto Inglis Pl
Destination will be on the right
150 m



66 Inglis Place, Truro, NS

Elegant Steps

• 5 min. drive from Inn on Prince Truro • elegantsteps.com • (902) 897-4950 •

Elegant Steps - 'Wear' Fashions Meet Footwear!' - is a small independent shoe and fashion store located at 58 Inglis Place in downtown Truro, Nova Scotia. We specialize in fine fashions, footwear, and accessories. We are an authorized Merle Norman location, and carry the full line of skincare and cosmetics. We have been in business since 1992 and our staff are dedicated to providing excellent customer service and well-fitting clothing and shoes. We offer gift certificates as well as free gift wrapping. Our shoe sizes range from 5 to 11 (ladies).



Products:

Apparel
Footwear
Outerwear
Bags/Wallets
Jewellery
Accessories
Skincare
Cosmetics

- ↑ 1. Head east on Prince St/Nova Scotia Trunk 2 S toward Court St
230 m
- ↑ 2. Continue straight onto Prince St
850 m
- ↪ 3. Turn right onto Inglis Pl
Destination will be on the right
140 m

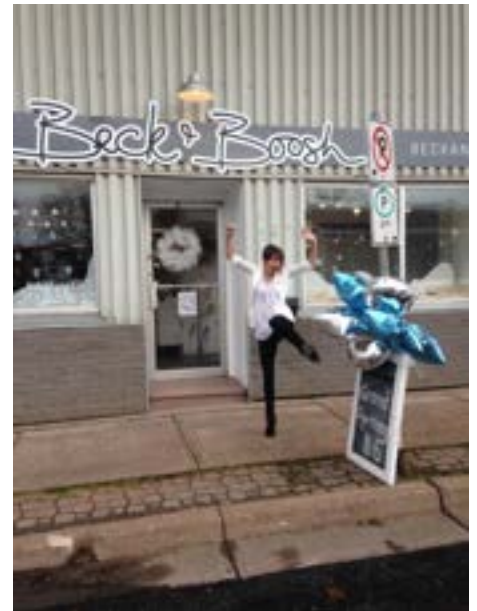
798 Prince Street, Truro, NS

Beck & Boosh

• 3 min. drive from Inn on Prince Truro • beckandboosh.com • (902) 843-4048 •

Our products come from all over the world. Always with Beck & Boosh Style, Uniqueness & Quality in mind, some pieces are designed & hand crafted in our shop, while others are designed in-house & are made by companies we know & trust. Select pieces are also curated from other artisans' collections.

The base metal of our jewelry is brass, alloy or stainless steel with silver, gold or black rhodium plating. All of our pieces are lead and cadmium free & all pieces are nickel free excluding stainless steel which has a small nickel content.



Products:

Necklaces
Earrings
Rings
Brooches
Scarves
Hats
Socks

- ↑ 1. Head east on Prince St/Nova Scotia Trunk 2 S toward Court St
230 m
- ↑ 2. Continue straight onto Prince St
350 m
- ↗ 3. Turn right onto Pleasant St
300 m
- ↖ 4. Turn left onto Victoria St
400 m
- ↗ 5. Turn right onto Forrester St
69 m
i Destination will be on the left

57 Inglis Place, Truro, NS

Alderberry Village

• 5 min. drive from Inn on Prince Truro • (902) 893-0159 •

Handcrafted items and unique home decor in a country general store.



Products:

Home Décor
Bath & Beauty
Candles
Accessories
Art
Gifts
Antiques

- ↑ 1. Head east on Prince St/Nova Scotia Trunk 2 S toward Court St
230 m
- ↑ 2. Continue straight onto Prince St
850 m
- ↪ 3. Turn right onto Inglis Pl
Destination will be on the left
130 m

53 Inglis Place, Truro, NS

Stanfield's Factory Outlet

• 4 min. drive from Inn on Prince Truro • stanfields.com • (902) 895-5406 •

For over 160 years (1856), Stanfield's Limited has been operating as a knit manufacturer here in Truro, Nova Scotia, Canada. We've been in the same building now, alongside the river, for over 100 years and truly are a part of Truro, Nova Scotia and Canada's story. To this day we still do everything from develop fabrics, cut, stitch, sew, design and knit our own garments to create unique products made right here in Truro, NS.

For over 25 years, The Factory Outlet has been where we offer our first quality clearing items and any seconds we may have. We offer premium merchandise at outlet prices and are proud to still see people across Nova Scotia and Canada in their Stanfield's. BUT because our items are in such high demand, they move much faster than we could ever tell you the full history of the company.



Products:

- Men's Apparel
- Women's Apparel
- Children's Apparel
- Outwear
- Undergarments

- ↑ 1. Head east on Prince St/Nova Scotia Trunk 2 S toward Court St 230 m
- ↑ 2. Continue straight onto Prince St 190 m
- ↶ 3. Turn left onto Revere St 130 m
- ↷ 4. Turn right onto Queen St 700 m
- ↶ 5. Turn left onto Logan St 140 m
- ↷ 6. Logan St turns right and becomes Bayview St
⚠ Restricted usage road
📍 Destination will be on the left 4 m

1 Logan Street, Truro, NS

The Hub (Truro Mall)

• 3 min. drive from Inn on Prince Truro • trurohub.ca • (902) 895-0531 •

The Hub is an enclosed shopping centre located within the main commercial artery of Nova Scotia's largest town of Truro, located approximately 1 hour from Halifax. Truro Mall has everything you are looking for with a ton of major stores and a food court!



Stores:

Ardene
Coles
Bluenotes
EB Games
Dollarama
Eclipse
Hallmark
Maurices
Michaels
Mark's
Northern Reflections
Pseudio
The Children's Place
Warehouse One
Winners
And many, many more!

- ↑ 1. Head west on Prince St/Nova Scotia Trunk 2 N toward Whitman Ct
650 m
- ↘ 2. Turn right onto Nova Scotia Trunk 2 N
650 m
- ↘ 3. Turn right
Destination will be on the left
110 m

245 Robie Street, Truro, NS

Fundy Trail Centre

• 6 min. drive from Inn on Prince Truro • (902) 752-3700 •

The Fundy Trail Centre offers more than 14 brand name stores as well as a huge indoor flea market every Sunday from 9am – 1:30pm!



Stores:

Canadian Tire
Sobeys
The Scissor Haven Salon
Water & Wine
M&M Food Market
Boston Pizza
Sell Off Vacations
Mr. 10 Asian Cuisine
Global Pet Foods
The Rolling Phones
Easyhome
Cleve's Source for Sports
Truro Walk-in Clinic
Staples Business Depot

- ↑ 1. Head west on Prince St/Nova Scotia Trunk 2 N toward Whitman Ct
_____ 650 m
- ↘ 2. Turn right onto Nova Scotia Trunk 2 N
_____ 1.4 km
- ↙ 3. Turn left
_____ 86 m
- ↘ 4. Turn right
_____ 94 m
- ↙ 5. Turn left
_____ 71 m
- ↘ 6. Turn right
📍 Destination will be on the left
_____ 9 m

68 Robie Street, Truro, NS

Cineplex Theatres

• 9 min. drive from Inn on Prince Truro • cineplex.com • (902) 895-8022 •

Modern multiplex cinema chain screening the latest Hollywood films, plus new independent releases. A wide variety of choices at the concession stand and a family friendly arcade.



Follow Nova Scotia Trunk 2 S to McClures Mills Rd

3 min (1.7 km)

1. Head east on Prince St/Nova Scotia Trunk 2 S toward Court St
230 m
2. Turn right onto Willow St/Nova Scotia Trunk 2 S
1.5 km

Get on NS-102 S in Truro Heights

3 min (1.8 km)

3. Turn right onto McClures Mills Rd
1.1 km
4. Continue onto Truro Heights Connector Rd
220 m
5. Take the Nova Scotia Highway 102 S ramp to Halifax
550 m

Continue on NS-102 S to Millbrook. Take exit 13A from NS-102 S

2 min (2.0 km)

6. Merge onto NS-102 S
1.8 km
7. Take exit 13A for Treaty Connector toward Millbrook
240 m

Continue on Treaty Connector to your destination

1 min (280 m)

8. Turn right onto Treaty Connector
93 m
9. Turn left onto Treaty Trail
130 m
10. Turn right
53 m
11. Turn left
Destination will be on the right
10 m